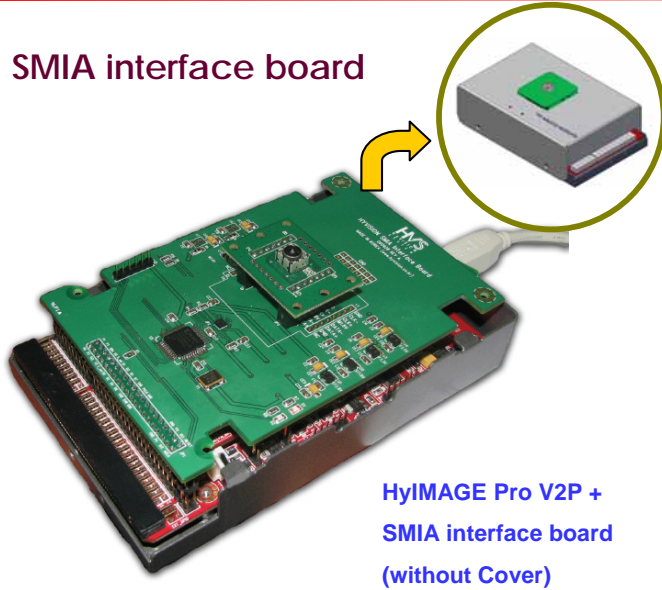


SMIA solution for HyIMAGE Pro V2P



- SMIA Specification compliant
- Class0,1,2 support (Up to 650Mbps bandwidth)
- Conversion solution from HyIMAGE Pro V2P

► SMIA interface board



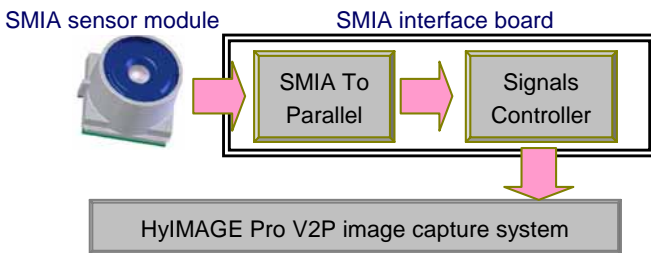
□ Features

- SMIA 1.0 compliant sensor acceptable
- Base imaging system: HyIMAGE Pro V2P
- Class Support: Class0, Class1&Class2
- SMIA65, SMIA85, SMIA95
- Programmable Power setting; 4 channel (1.5-3.6V/channel)
- Current measurement; 4 channel (500uA/2uA resolution)
- Image clock generation; Up to 68MHz (0.01MHz step)
- Command: CCI(I2C) Interface compliant
- HyIMAGE Pro V2x SDP provided
- PC Interface; USB2.0 (480Mbps) interface
- Windows2000/XP support
- Dimension: 150x99x42.7 (WDH/mm) w/o target board

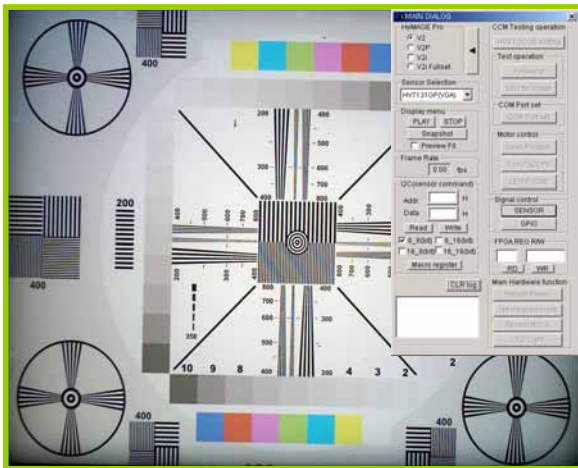
□ Application range

- Mobile camera module research • evaluation
- Image processing • compression algorithm research
- Image Sensor characteristics Analysis • Evaluation
- Lens characteristics analysis • Machine Vision • etc

※For more detail V2P specification, please refer to the HyIMAGE Pro V2P datasheet.



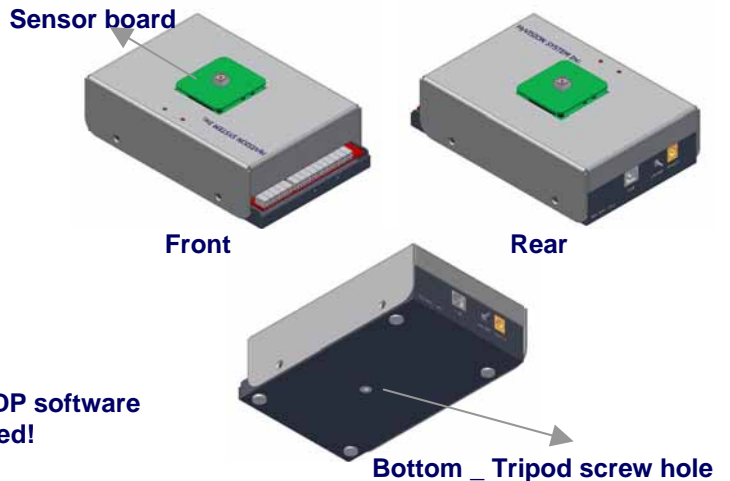
► hyIMAGE Pro V2x SDP



V2P SDP operating screen

Power SDP software is provided!

► hyIMAGE Pro V2P SMIA solution drawings



[hyIMAGE Pro V2P SMIA solution]

- Includes hyIMAGE Pro V2P board • SMIA interface board • housing • Image Sensor board(Not included) • USB Driver • V2x SDP program source code & Library (VC++) • USB Cable • User's manual

※ For more detail specifications and requirements, please refer to the specification documents and contact us!