

HyCARE™



Skin & Hair diagnostic kit
x50 x200 x500 lens
USB 2.0 interface
VGA 640 x 480 CMOS
Software – JP Viewer
High quality with Competitive price



<http://cafe.naver.com/hycare>

■ Specification

Resolution	VGA 640 x 480
Sensor	YUV CMOS 1/5 inch
Frame rate	30f/s
Data Format	YUV 4:2:2
S/N Ratio	50dB
Dynamic range	60dB
Driver	UVC v.1.0 (USB Video device Class)
OS	Window XP (with Service Pack2), Vista
SW	Basic SW: JP Viewer
Lens	x50, x200, x500
Led On/Off	Toggle Switch
Light source	Ultra bright white LED 8ea
Interface	USB 2.0 (480Mbps)
Power	USB single 5V power
Temperature	0 ~ 60 °C
Function	snapshot : HW button and SW snapshot support
Cable length	2.2 m
Weight	200g
Dimension	87(W)x155.8(H)x81(D)mm

■ Application

Shop	Beauty shop, Skin care center, Oriental medicine clinic, Skin care specialized clinic, Cosmetic shop etc.
Company	Care system SW developing company, Care system application HW company, Cosmetic company, Exporter etc.

■ Basic contents



Body



Lens x200



Manual & SW CD

■ Option



Lens x50 x500



Stand



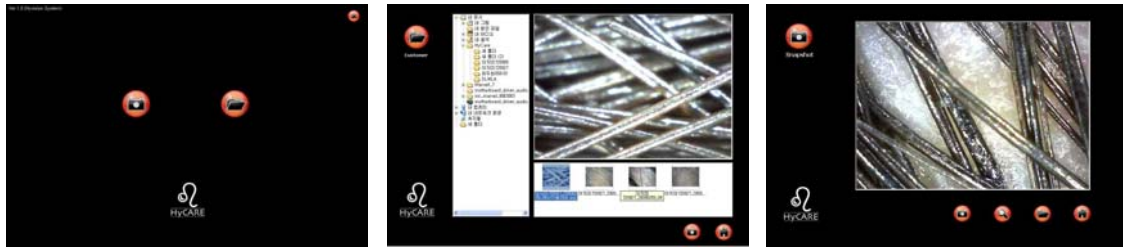
Fabric Case



Hard Case

- Design and color of Stand and Cases are subject to change.
- Lens x200 can be replaced with x50, x500 in basic contents.
- Basic SW, JP Viewer is free software with simple function.
- Professional SW can be discussed.

■ Software – JP Viewer



- Viewer / Folder arrangement / Magnifying Image / Link to A/S website

■ PC & SW requirements

CPU	PENTIUM3 1GHz or higher
HARD DISK	20GB or higher
USB PORT	2.0 or higher (mandatory)
RAM	256MB or higher
OS	WINDOW XP (with Service Pack2), Vista (mandatory)

■ HyCARE Images

